



Carlton Place Walfords Close, Old Harlow,
CM17 0FH

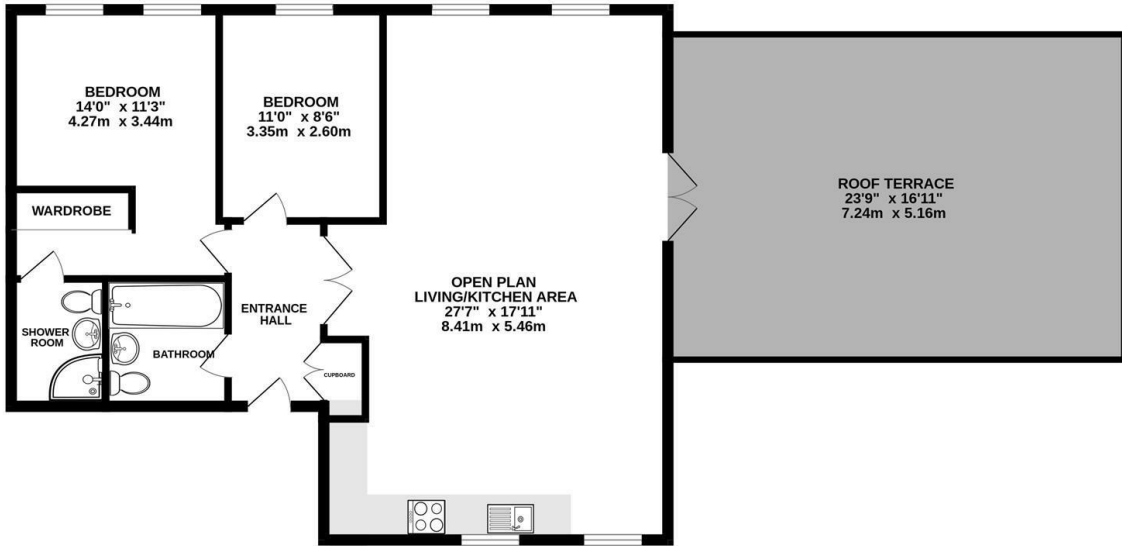


£1,700 PCM (per calendar month) PCM
Holding Deposit equal to 1 weeks rent
Tenancy Deposit equal to 5 weeks rent
Council Tax Band: E

Available to rent from the beginning of July 2026 is this two bedroom penthouse style apartment with its very own private roof terrace, further benefits include two double bedrooms the master with ensuite and dressing area, open plan living/kitchen area, bathroom and underground parking for two cars.

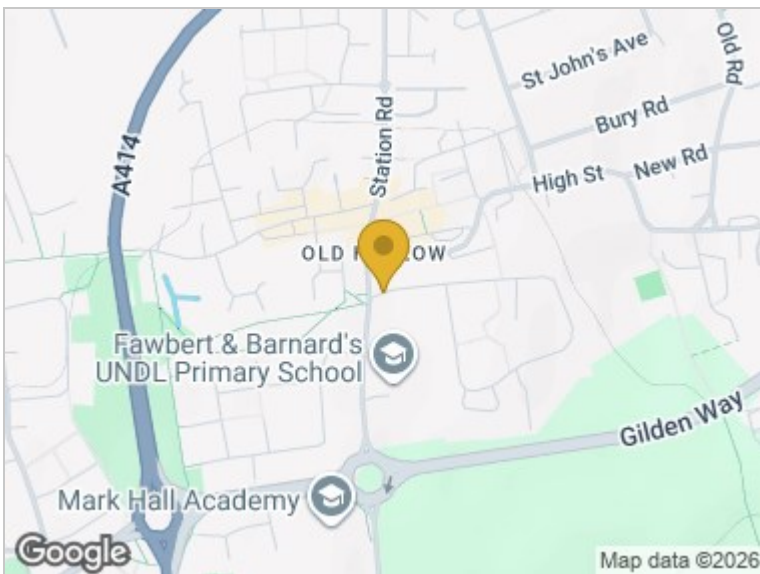


SECOND FLOOR
830 sq.ft. (77.1 sq.m.) approx.



TOTAL FLOOR AREA: 830 sq.ft. (77.1 sq.m.) approx.

Whilst every attempt has been made to ensure the accuracy of the floorplan contained here, measurements of doors, windows, rooms and any other items are approximate and no responsibility is taken for any error, omission or mis-statement. This plan is for illustrative purposes only and should be used as such by any prospective purchaser. The services, systems and appliances shown have not been tested and no guarantee as to their operability or efficiency can be given.
Made with Metropix ©2025



Energy Efficiency Rating		Current	Potential	Environmental Impact (CO ₂) Rating		Current	Potential
Very energy efficient - lower running costs				Very environmentally friendly - lower CO ₂ emissions			
(92 plus) A				(92 plus) A			
(81-91) B				(81-91) B			
(69-80) C				(69-80) C			
(55-68) D				(55-68) D			
(39-54) E				(39-54) E			
(21-38) F				(21-38) F			
(1-20) G				(1-20) G			
Not energy efficient - higher running costs				Not environmentally friendly - higher CO ₂ emissions			
England & Wales		EU Directive 2002/91/EC		England & Wales		EU Directive 2002/91/EC	
		85	85				

These particulars, whilst believed to be accurate are set out as a general outline only for guidance and do not constitute any part of an offer or contract. Interested parties should not rely on them as statements of representation of fact, but must satisfy themselves by inspection or otherwise as to their accuracy. No person in this firm's employment has the authority to make or give any representation or warranty in respect of the property.